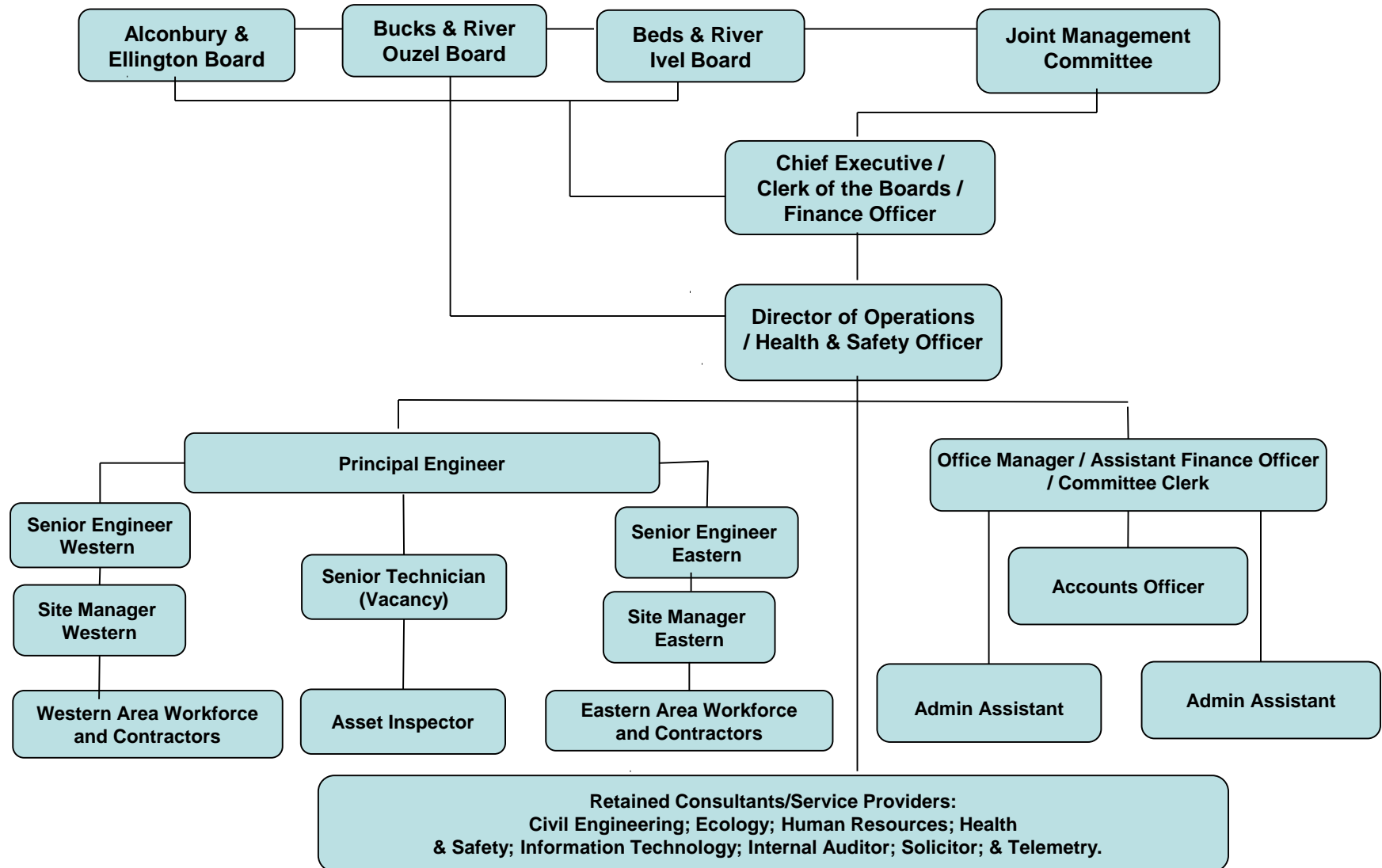


BEDFORD GROUP ORGANISATIONAL STRUCTURE



Personnel

Administration

| | | |
|----------------|---|----------------------------|
| Frances Bowler | Chief Executive, Clerk & Finance Officer | frances.bowler@idbs.org.uk |
| Ruth Easom | Office Manager / Assistant Finance Officer / Committee Clerk | ruth.easom@idbs.org.uk |
| Nicole Souter | Accounts Officer | nicole.souter@idbs.org.uk |
| Alice Smith | Admin Assistant | alice.smith@idbs.org.uk |
| Susan Cannon | Admin Assistant | susan.cannon@idbs.org.uk |

Engineering

| | | |
|-----------------|---------------------------|-----------------------------|
| John Oldfield | Director of Operations | john.oldfield@idbs.org.uk |
| Trevor Skelding | Principal Engineer | trevor.skelding@idbs.org.uk |
| Barry Cannon | Senior Engineer - Eastern | barry.cannon@idbs.org.uk |
| Phillip Lovesey | Senior Engineer - Western | phillip.lovesey@idbs.org.uk |
| Vacancy | Senior Technician | |
| Simon Fox | Site Manager - Eastern | simon.fox@idbs.org.uk |
| Malcolm Hodges | Site Manager – Western | malcolm.hodges@idbs.org.uk |
| Alan Fleet | Asset Inspector | |

Workforce - 10 personnel