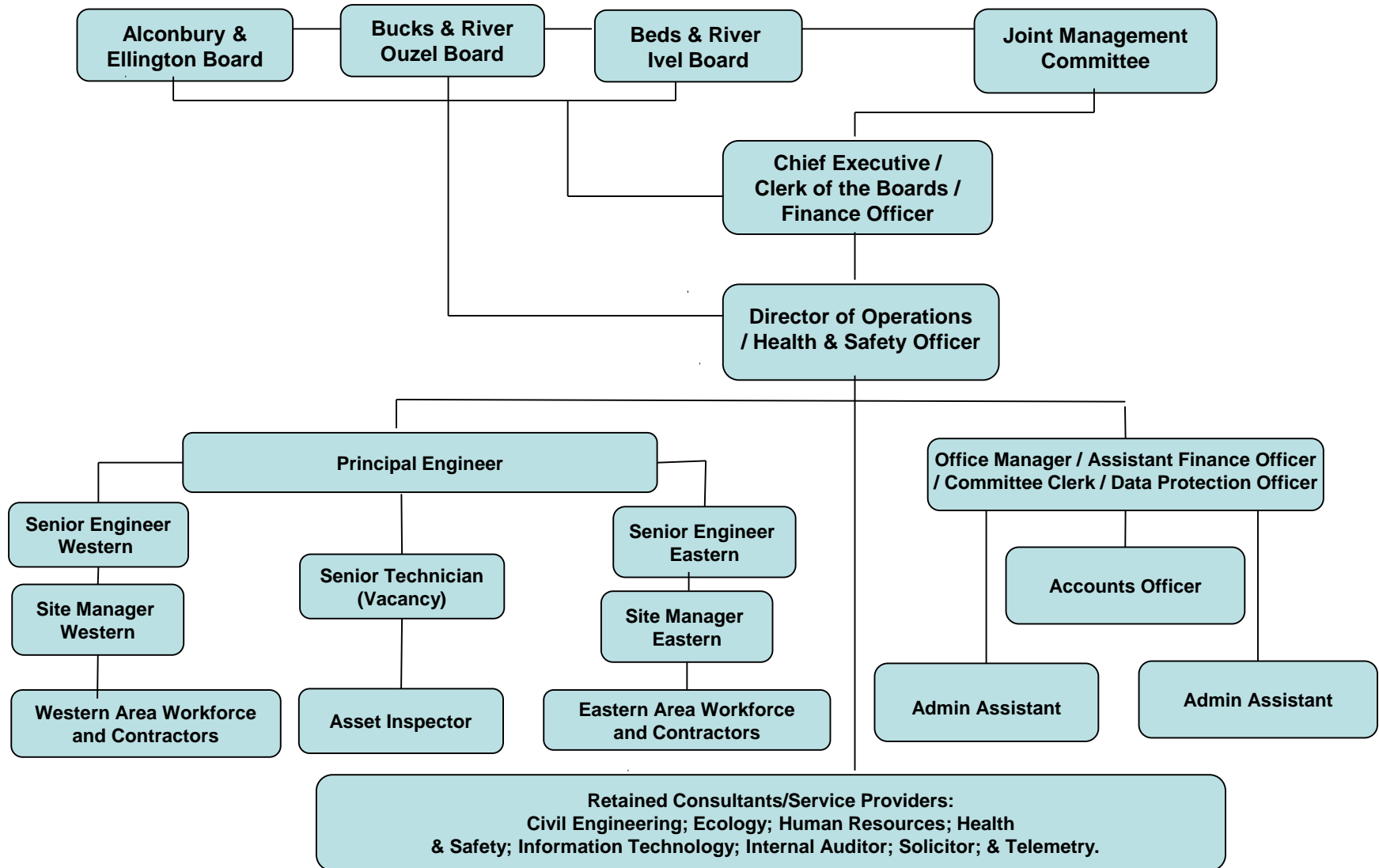


BEDFORD GROUP ORGANISATIONAL STRUCTURE



Personnel

Administration

Frances Bowler	Chief Executive, Clerk & Finance Officer	frances.bowler@idbs.org.uk
Ruth Easom	Office Manager / Assistant Finance Officer / Committee Clerk / Data Protection Officer	ruth.easom@idbs.org.uk
Nicole Souter	Accounts Officer	nicole.souter@idbs.org.uk
Alice Smith	Admin Assistant	alice.smith@idbs.org.uk
Susan Cannon	Admin Assistant	susan.cannon@idbs.org.uk

Engineering

John Oldfield	Director of Operations	john.oldfield@idbs.org.uk
Trevor Skelding	Principal Engineer	trevor.skelding@idbs.org.uk
Barry Cannon	Senior Engineer - Eastern	barry.cannon@idbs.org.uk
Phillip Lovesey	Senior Engineer - Western	phillip.lovesey@idbs.org.uk
Vacancy	Senior Technician	
Simon Fox	Site Manager - Eastern	simon.fox@idbs.org.uk
Alan Fleet	Asset Inspector	

Workforce - 10 personnel