

# NEWSLETTER 2025

Official Newsletter of The Bedford Group of Drainage Boards'



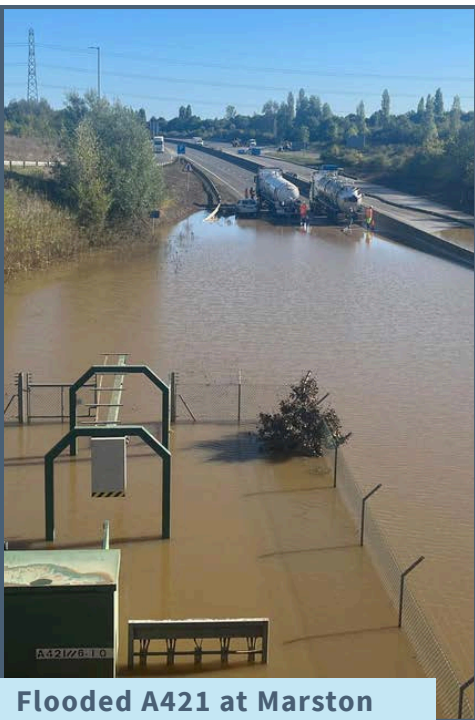
## BEDFORD GROUP OF DRAINAGE BOARDS' ROLE IN THE A421 FLOOD RESPONSE

September 2024 brought record-breaking rainfall to Bedfordshire, leading to severe flooding on the A421. With infrastructure overwhelmed, the Bedford Group of Internal Drainage Boards (IDBs) played a key role in response efforts, working alongside National Highways and local agencies to mitigate the impact.

Water levels reached 13 feet and continued rising due to continued rainfall. As an active member of the Bedfordshire Local Resilience Forum (BLRF), the Bedford Group provided expert guidance on water management, directing floodwater to the Board's well-maintained arterial network while ensuring safe discharge locations to prevent further environmental impact.

With up to 25 tankers and high-volume pumps operating around the clock, the Bedford Group's expertise ensured over 80 million litres of water were removed efficiently. Their in-depth knowledge of the region's drainage infrastructure was instrumental in safeguarding nearby systems and engineering structures, while also ensuring no additional flood risk was encountered for the surrounding areas.

While floodwaters were eventually cleared, the incident underscored the importance of long-term flood resilience. The Bedford Group remains committed to working with partners to protect public infrastructure and enhance flood management strategies in the face of increasingly extreme weather events.



Flooded A421 at Marston Moretaine

### FOLLOW US

Keep up to date with our latest news:

 [@BedfordGroupIDB](https://www.instagram.com/BedfordGroupIDB) 

 [Bedford Group of Drainage Boards](https://www.linkedin.com/company/BedfordGroupofDrainageBoards) 

### DRAINAGE RATES BY EMAIL

The Board are actively working to reduce it's carbon footprint. You can now receive your Drainage Rate Demand via email, please contact [rating@idbs.org.uk](mailto:rating@idbs.org.uk)

### METHODS OF PAYMENT

- **Bank Transfer** - Bank details can be found on the bank giro slip at the base of your demand
- **By Phone** - Call the office on 01234 767995
- **Cash or Cheque**

# MORE FROM THE TEAM



**Piling work to weir at Eaton Bray & Revetment works to River Ouzel**

## Watercourse Regulation

The Board regulates any work under the Land Drainage Act 1991, which may impact flood risk or drainage. Consent is required for (but not limited to) watercourse alterations (crossing, culverting or diverting), discharging water to a watercourse, undertaking works adjacent to the Board's infrastructure (such as pumping stations or Arterial Watercourses) and any works within 9m of the watercourse including planting, building and fencing.

## Private Watercourse Maintenance

All landowners are responsible for maintaining the watercourses (including piped watercourses) flowing through or adjacent to their property, this is called riparian ownership. Where a watercourse forms the boundary of a property it is implied the landowner owns up to the centre line of the watercourse, unless the official title deeds indicate otherwise.

For further information please visit:

[www.gov.uk/guidance/owning-a-watercourse](http://www.gov.uk/guidance/owning-a-watercourse)

## Ongoing Partnerships

The Board continues to support major infrastructure projects across the district, working to ensure that development aligns with our responsibilities for land drainage and environmental protection.

We remain engaged with **Universal Destinations & Experiences**, providing early input and ongoing support for the development of **Universal Studios UK** while safeguarding the integrity of the local drainage systems and environment.

Our collaboration with **HS2** also continues, with both temporary and permanent consents being issued to facilitate construction within the Board's area.

Board officers have been actively involved in the **A428 Black Cat to Caxton Gibbet** upgrade, helping to prevent conflicts with Board assets and avoid delays to the project's progress.

We are also working closely on the **East West Rail** scheme, having been involved in all three phases to date. Work on Phase 2 (Bletchley to Bedford) is currently underway, while Phase 3 (Bedford to Cambridge) remains in the planning stages.



HS2



## YFC Rally & Bucks County Show 2025

The Board is looking forward to attending the Bucks County Show at Weedon Park on Thursday 28th August 2025 for the second year running, following a successful visit in 2024 which helped strengthen relationships with local landowners and ratepayers.

We're also pleased to be returning to the Bedfordshire Young Farmers Rally at New Manor Farm, Harlington on Saturday 17th May 2025, marking our first attendance since 2022.

We look forward to welcoming you onto our stand.



**Trade stand at Bucks County Show 2024**

## Maintenance Programmes 2025/26

The Board undertakes a rolling programme of asset inspections. Watercourses are inspected and assessed for their overall condition and recorded into the Board's Asset Management System. This information is then used to identify the watercourses most in need of maintenance and aid the development of the annual maintenance programme. Our maintenance programmes for 2025/26 can be viewed on our website or by scanning the QR code.



## CONTACT US

Bedford Group of Drainage Board's, Vale House, Broadmead Road, Stewartby, Bedford, MK43 9ND

t: [01234 767995](tel:01234767995) | e: [contact@idbs.org.uk](mailto:contact@idbs.org.uk) | [www.idbs.org.uk](http://www.idbs.org.uk)

