

# NEWSLETTER 2026

Official Newsletter of the Upper Ouse Water Management Board  
01234 767995 | [Contact@idbs.org.uk](mailto:Contact@idbs.org.uk)



Weed Removal - September 2025

## AMALGAMATION:

You may notice a new name on this newsletter. On 01 April 2026 the 'Bedford Group of Drainage Boards' underwent an amalgamation to become the Upper Ouse Water Management Board.

Following the approval from DEFRA, we have simply combined the 3 Internal Drainage Boards:

- Alconbury and Ellington
- Bedfordshire and River Ivel
- Buckingham and River Ouzel

to become one singular Board, the **Upper Ouse Water Management Board**.

### What this means for you

- **Same Coverage & Service:** We cover exactly the same geographical area as before.
- **Business as Usual:** Maintenance works, operations, and watercourse categories within our network remain unchanged.
- **Efficiency:** Merging into one district streamlines our administration, ensuring more resilient and efficient water management across the region.

For any further questions that aren't answered here or on the FAQs page of our website, please contact the Boards offices on **01234 767995** or by email to [contact@idbs.org.uk](mailto:contact@idbs.org.uk)

## FOLLOW US

Keep up to date with our latest news:



[@UpperOuseWMB](https://twitter.com/UpperOuseWMB)



[Upper Ouse Water Management Board](https://www.facebook.com/UpperOuseWaterManagementBoard)



## DRAINAGE RATES BY EMAIL

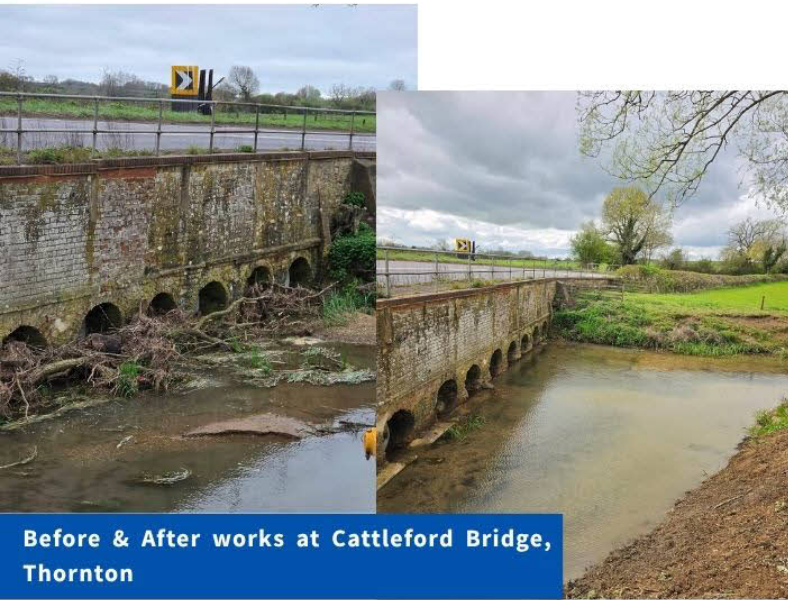
The Board are actively working to reduce our carbon footprint. You can now receive your Drainage Rate Demand and a map of the land associated with your account via email.

**PLEASE NOTE, YOUR ACCOUNT REFERENCE NUMBER WILL BE DIFFERENT TO LAST YEARS**

## METHODS OF PAYMENT

- **Bank Transfer** - Bank details can be found on the bank giro slip at the base of your demand
- **By Phone** - Call the office on 01234 767995
- **Cash** in person
- **Cheque** to the address overleaf

# MORE FROM THE TEAM



Before & After works at Cattleford Bridge, Thornton

## SHAPING OUR DISTRICT: JOIN OUR ADVISORY COMMITTEES

As a ratepayer, you have a direct stake in how our local water levels and flood risks are managed. But did you know you can also have a direct voice? We are currently looking for enthusiastic community members to join our Advisory Committees.

### What Do Advisory Committees Do?

Advisory Committees play a vital role in our operations. They act as a bridge between local ratepayers and the main Board, providing essential grassroots feedback.

As a committee member, you will:

- Share Local Knowledge: Highlight specific drainage, environmental, or flooding concerns in your area.
- Review Local Schemes: Provide feedback on proposed maintenance works and capital projects.
- Advise the Board: Help shape policies that directly impact your community and how ratepayer funds are best utilised.

You don't need to be a technical expert to join, local knowledge, a practical mindset, and a desire to make a positive impact are the most valuable assets you can bring. Meetings are held just a few times a year, making it a rewarding way to get involved without a massive time commitment.

### Get in Touch

If you are interested in joining a committee, or simply want to learn a bit more about what is involved, please reach out to the office.

## CONTACT US

Upper Ouse Water Management Board, Vale House, Broadmead Road, Stewartby, Bedford, MK43 9ND  
t: [01234 767995](tel:01234767995) | e: [contact@idbs.org.uk](mailto:contact@idbs.org.uk) | [www.idbs.org.uk](http://www.idbs.org.uk)

## WATERCOURSE REGULATION

The Board regulates any work under the Land Drainage Act 1991, which may impact flood risk or drainage. Consent is required for (but not limited to) watercourse alterations (crossing, culverting or diverting), discharging water to a watercourse, undertaking works adjacent to the Board's infrastructure (such as pumping stations or Arterial Watercourses) and any works within 9m of the watercourse including planting, building and fencing.

## PRIVATE WATERCOURSE MAINTENANCE

All landowners are responsible for maintaining the watercourses (including piped watercourses) flowing through or adjacent to their property, this is called **riparian ownership**. Where a watercourse forms the boundary of a property it is implied the landowner owns up to the centre line of the watercourse, unless the official title deeds indicate otherwise.

For further information please visit:

[www.gov.uk/guidance/owning-a-watercourse](http://www.gov.uk/guidance/owning-a-watercourse)



Works at Great Barford - July 2025

## MAINTENANCE PROGRAMME 2026/27

The Board undertakes a rolling programme of asset inspections. Watercourses are inspected and assessed for their overall condition and recorded into the Board's Asset Management System. This information is then used to identify the watercourses most in need of maintenance and aid the development of the annual maintenance programme.

Our maintenance programme for 2026/27 can be viewed on our website or by scanning the QR code.

